



Trolleys | Electrical / Articulated

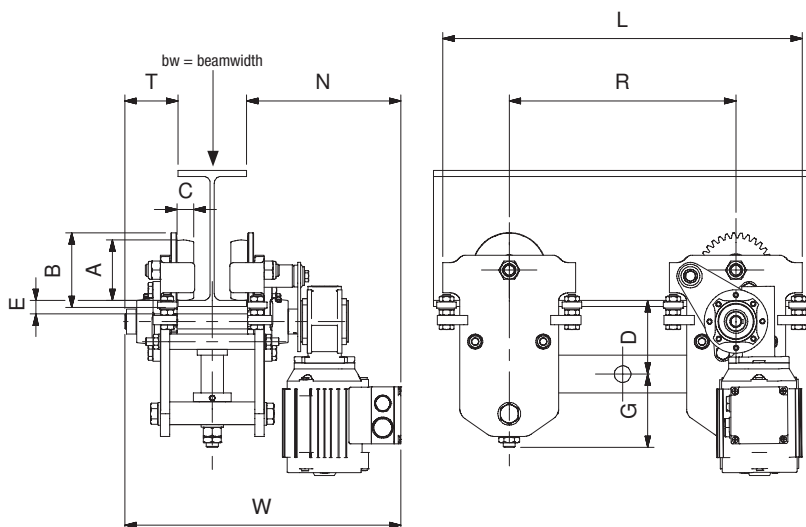


Features:

- Capacities 500-10.000 Kg
- Developed for extreme small curved beams
- Suspension of all types of hoists
- Delivered with motor and gearbox, without contactor controls and control box
- Single speeds design app. 10 m/min. in double speed 5 and 20 m/min
- Motor IP54, ISO F, 400/230V - 3 Ph - 50Hz, standard manufacturers' surface treatment
- Articulated trolley always designed for one specific beam type (non-adjustable)
- Trolley with standard surface treatment, 2 layer Alkyd paint 80 µm, RAL7021

Optional:

- Rubber buffers on trolley
- Relay box for trolley drive*
- Integration with electric chain hoist unit
- Special constructional design to suit specific hoist type
- Limit switches, mounted on trolley, excl. cabling
- Load test, with certificate
- Non corrosive treatments, special surface protection for aggressive environments, outdoor applications, offshore & marine environments. Reference to page 42 of this catalogue for detailed application information



Technical information:

- 1) Excl. additional counterweight (if applicable)
- 2) Extreme small beamwidth-combination with Radius, please contact us or your local agent.
- 3) Max. INP profile restriction for 22KN = INP360, 33 KN = INP400, 52/64 KN = INP450.

| Trolleys / Electrical / Articulated (Art. group 83300) | | | | | | | | | | | | | | | | | | | | | | | | | |
|--|-----------------------|-----------------|------------------------|------------------------------|------------|-----|----|-----|-----|-----|-----|-----|----|-----|--|----|----------|--|----------|---------------------|--|----------|---------------------|-------------------|---------|
| Capacity | Hoist Mass Max. | Chassis Type | beam width fixed | R(min). Radius Beam 2) | Dimensions | | | | | | | | | | Wormgeared Trolley + motor 83300 | | | Motor + brake Trolley + motor 1V = 10 m/min 83300 | | Relay box* 1V | Motor + brake Trolley + motor 2V = 5/20 m/min 83300 | | Relay box* 2V | Limit switches | |
| | | | | | A | B | C | D | E | G | L | R | T | N | | | | | | | | | | | W |
| | | | | | Kg. | Kg. | | mm. | mm. | | | | | | | | | | | Speed m/min | Art. Nr. | Price € | Art. Nr. | Price € | Price € |
| 1.000 | 250 | 22 KN | fixed | 450 | 80 | 100 | 22 | 145 | 20 | 73 | 525 | 350 | 70 | 200 | bw+270 | 10 | ..-01210 | | - | | | - | | | |
| 2.000 | 250 | 22 KN | fixed | 450 | 80 | 100 | 22 | 152 | 20 | 73 | 525 | 350 | 70 | 200 | bw+270 | 10 | ..-01211 | | - | | | - | | | |
| 3.200 | 150 | 33 KN | fixed | 500 | 100 | 120 | 25 | 191 | 20 | 73 | 570 | 380 | 70 | 220 | bw+290 | 10 | ..-03310 | | ..-03315 | | | ..-03321 | | | |
| 5.000 | 300 | 52 KN | fixed | 600 | 125 | 150 | 30 | 197 | 26 | 100 | 625 | 400 | 75 | 220 | bw+295 | 8 | ..-05210 | | ..-05215 | | | ..-05221 | | | |
| 6.300 | 200 | 64 KN | fixed | 600 | 125 | 150 | 30 | 214 | 26 | 100 | 675 | 450 | 75 | 220 | bw+295 | - | - | | ..-06415 | | | ..-06421 | | | |
| 8.000 | 550 | 84 KN | fixed | 800 | 160 | 190 | 35 | 208 | 33 | 130 | 705 | 450 | 80 | 240 | bw+320 | - | - | | ..-08415 | | | ..-08421 | | | |
| 10.000 | 600 | 104 KN | fixed | 900 | 160 | 190 | 35 | 261 | 33 | 130 | 780 | 500 | 80 | 250 | bw+330 | - | - | | ..-10415 | | | ..-10421 | | | |

* Relay Box : Terminal box with relay switching set, excl. transformer, excl. terminals, mounted on the trolley. Cable from motor to relaybox included.
Pendant control switch and control cable excluded.
Control voltage 24V or 48V.